

The Nagoya Protocol

... Building a healthy and sustainable society

...using nature's assets without losing it

CONSERVATION
INTERNATIONAL

Guyana



people need nature to thrive

The Nagoya Protocol, Indigenous People and Conservation International

- Enhancing mutual understanding between CI and indigenous groups
 - Reconciling the perspectives between traditional & conservation priorities, and promoting shared interests
 - Highlighting the value of strategic partnerships for the responsible and sustainable care for nature
-

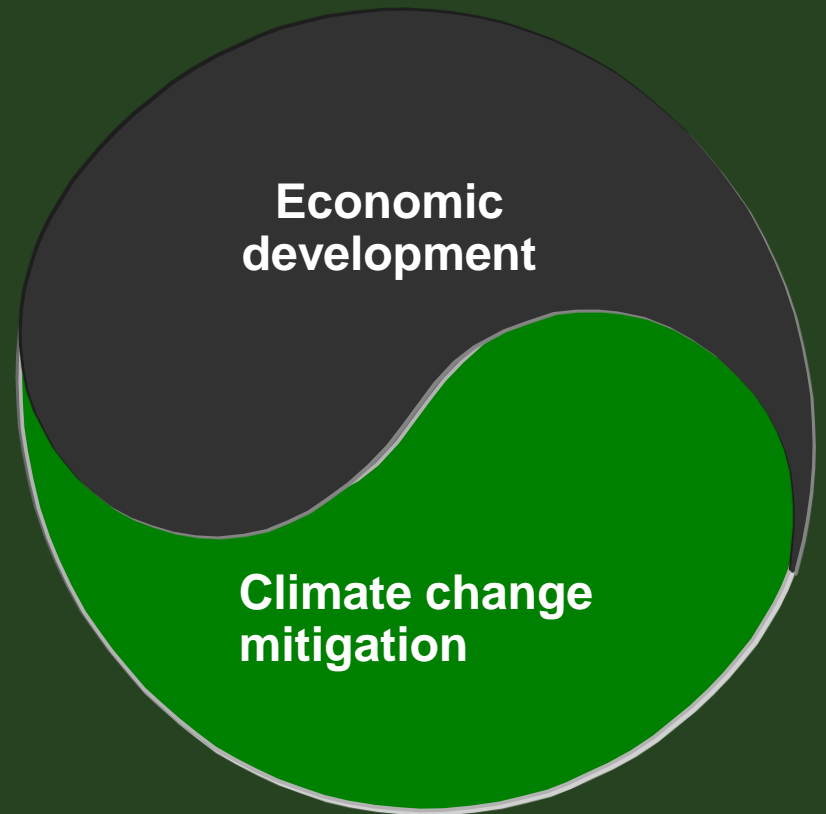
**A LOW-CARBON
DEVELOPMENT
STRATEGY**

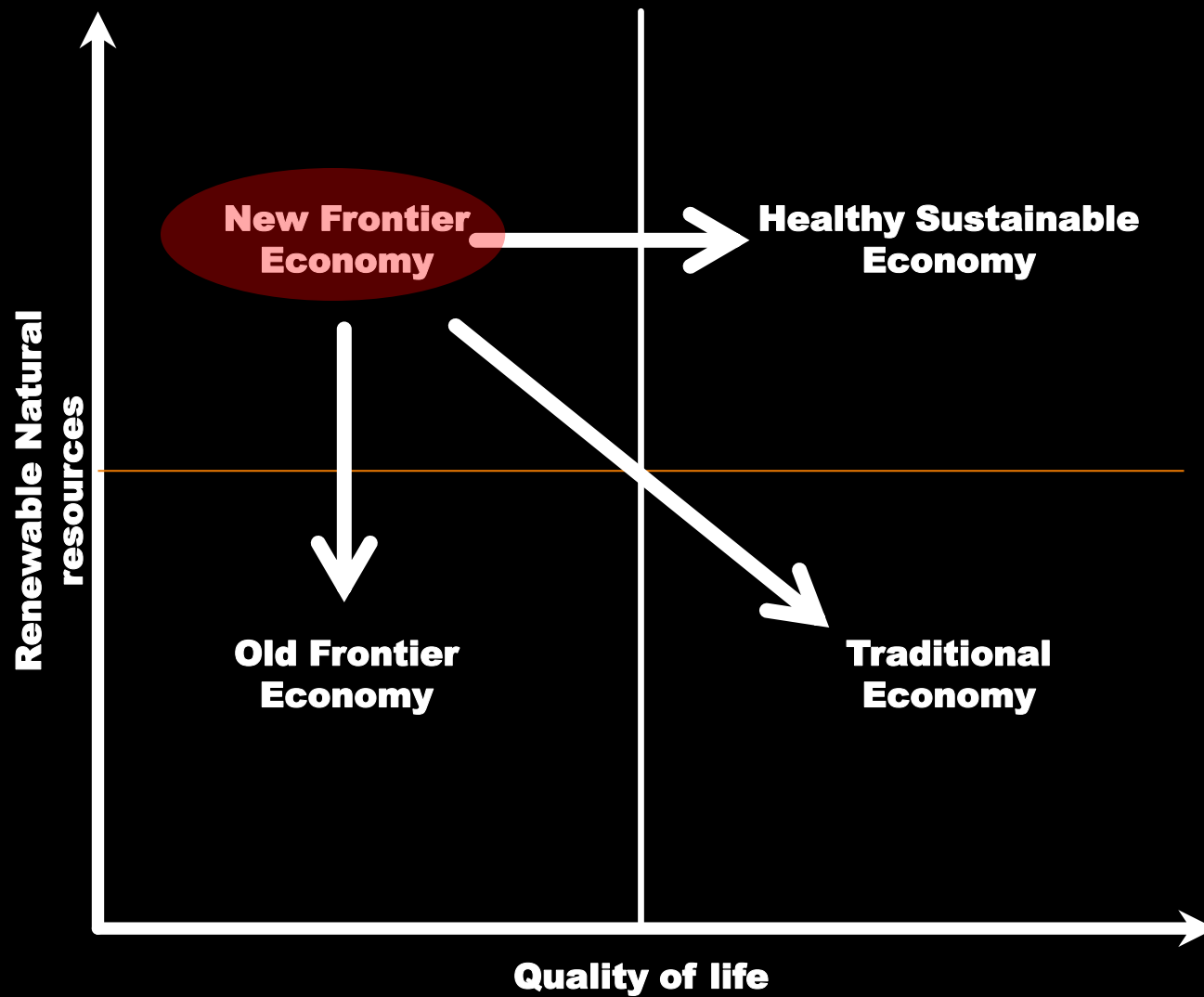


Transforming Guyana's
Economy While Combating
Climate Change

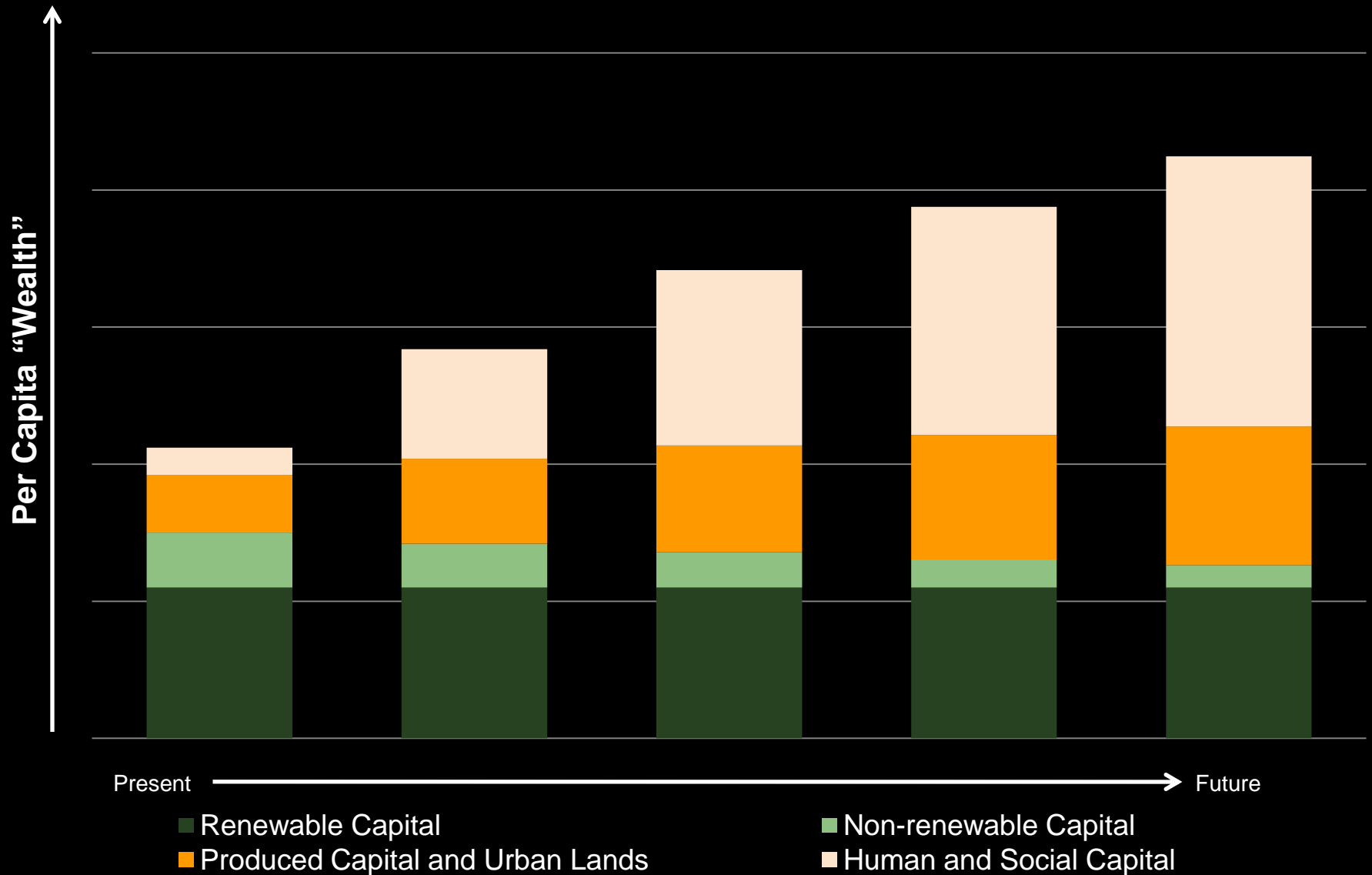
May 2009

Office of the President,
Republic of Guyana



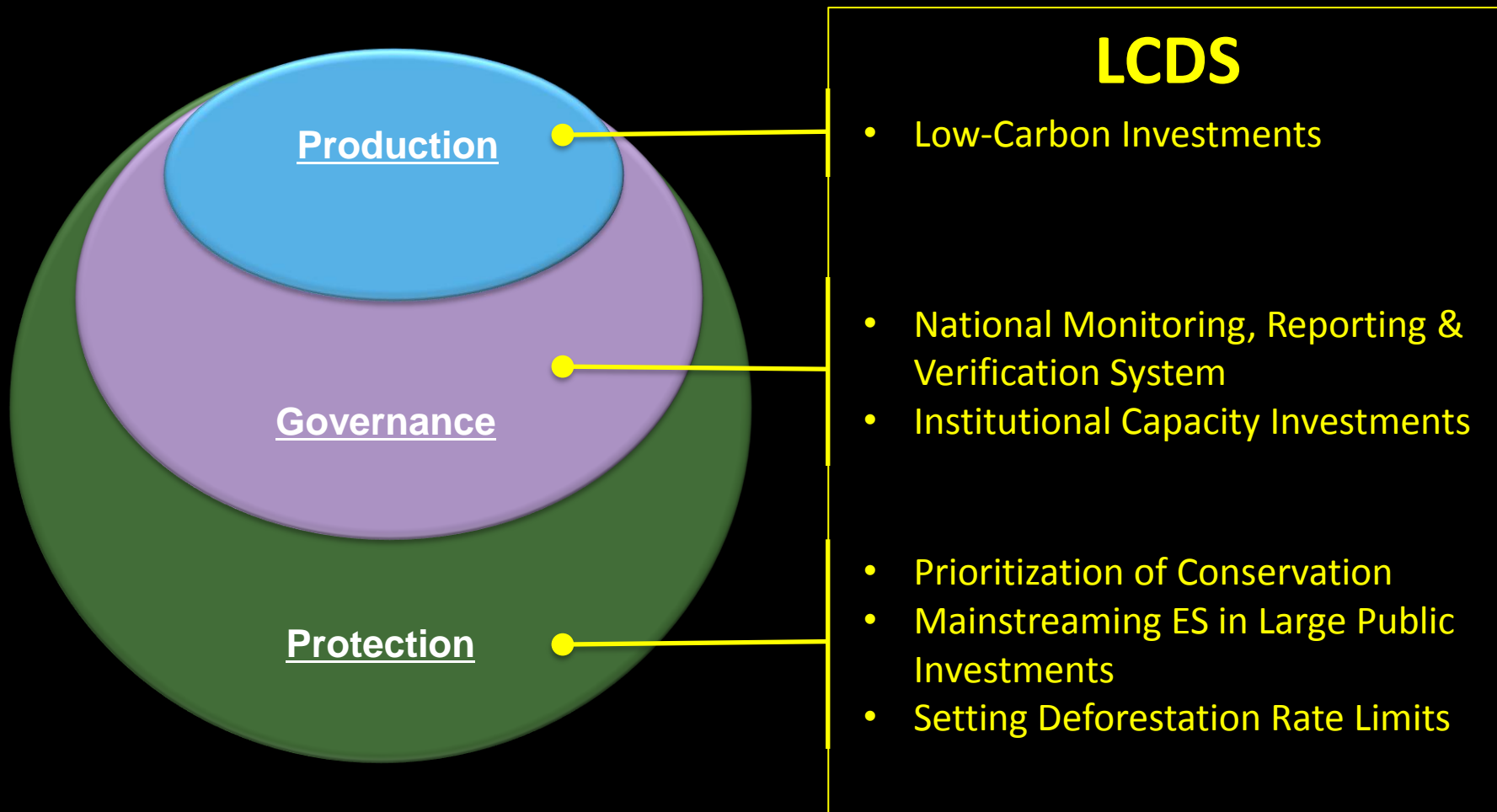


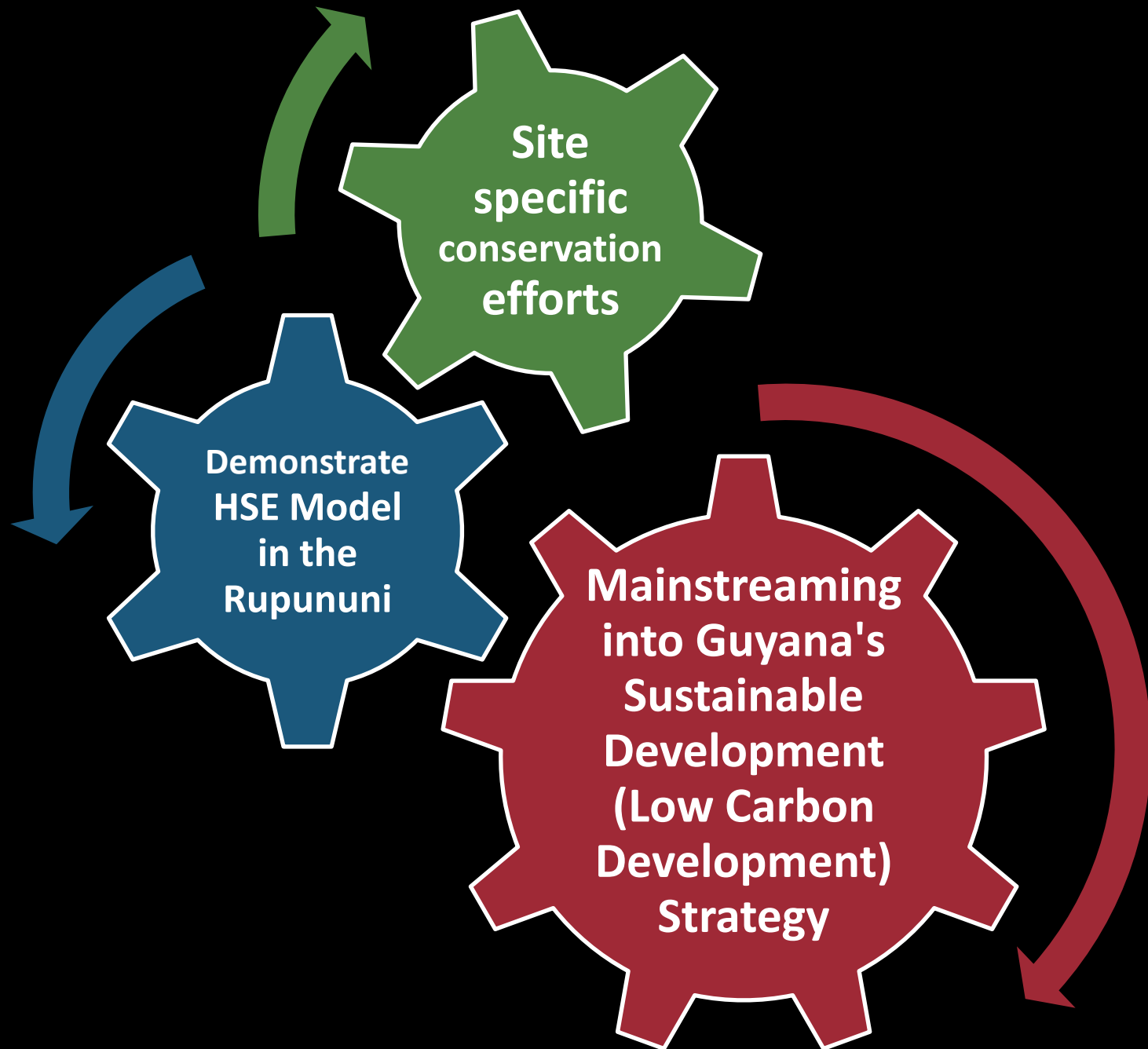
A realistic future.



The LCDS

Supporting growth of a Healthy, Sustainable Society

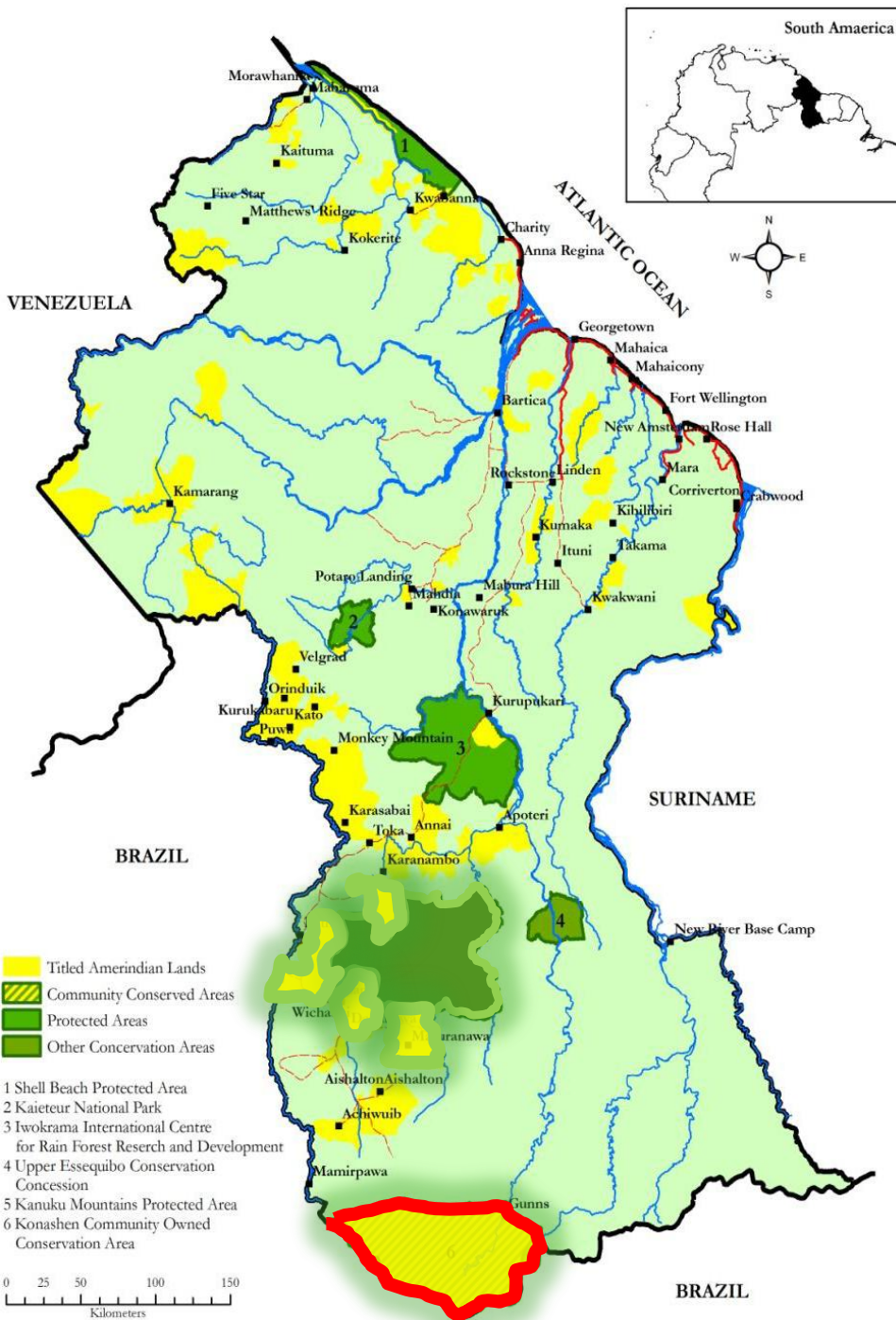






Three Examples

- Kanashen Community Owned Conservation Area
- Village Resource Development Planning in the Kanuku Mountain Villages
- Low Carbon Livelihoods in the Rupununi



Our lands are managed in a way that preserves the biodiversity, our traditions and our way of life, while providing for both community and family development

Kanashen Village Management

Managing land that
uses resources
sustainably and
keeps biodiversity

Preserving
traditions and ways
of life

Developing
community as a
whole

Improving the
livelihood of each
of our families

Participating in the
National Protected
Areas System

Ensuring
availability of funds
to implement our
management plan

Strengthening our
people to
independently
manage our land

Targets

Socio-economic and Cultural

Household health
practices

Food and Nutrition

Traditional
education practices

Traditional
subsistence/ home
provisioning
activities

Health services

Education

Management
system

Transportation

Secondary
education

KCOCA Manager

Technical skills

Computer skills

Wai-Wai language

Utensils/ Tools

History and
Archaeology

Long-term funding

Biological Targets

Farmlands

Drinking water

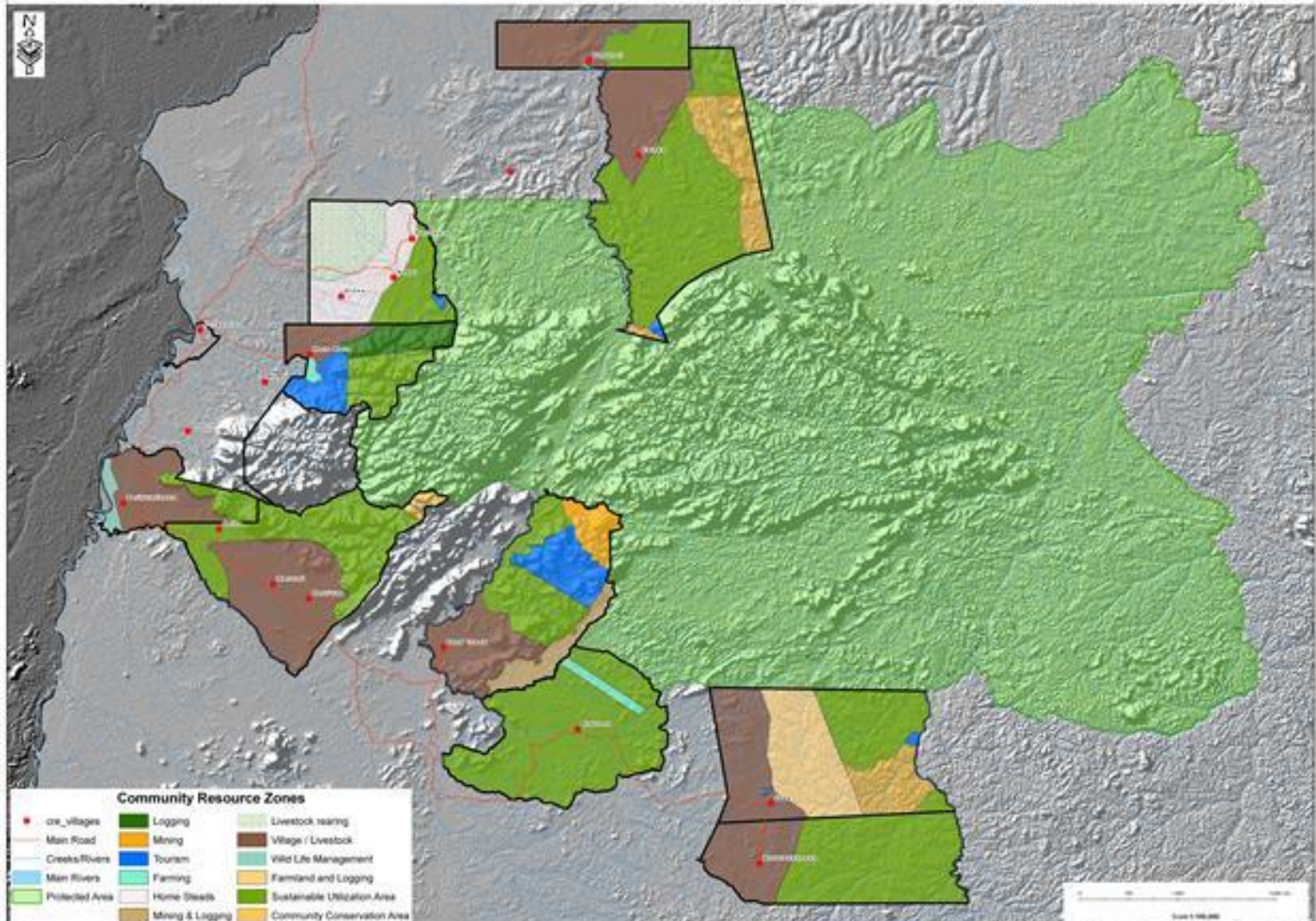
Forests

Fire wood

Threatened
species

Village Resource Development Planning in the Kanuku Mountain Villages

ZONED KANUKU MOUNTAINS VILLAGES & KANUKU MOUNTAINS PROTECTED AREA

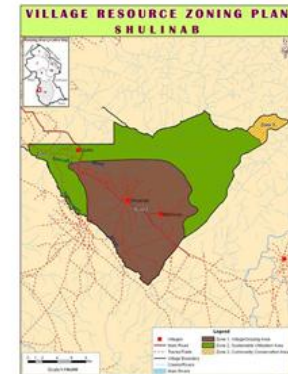
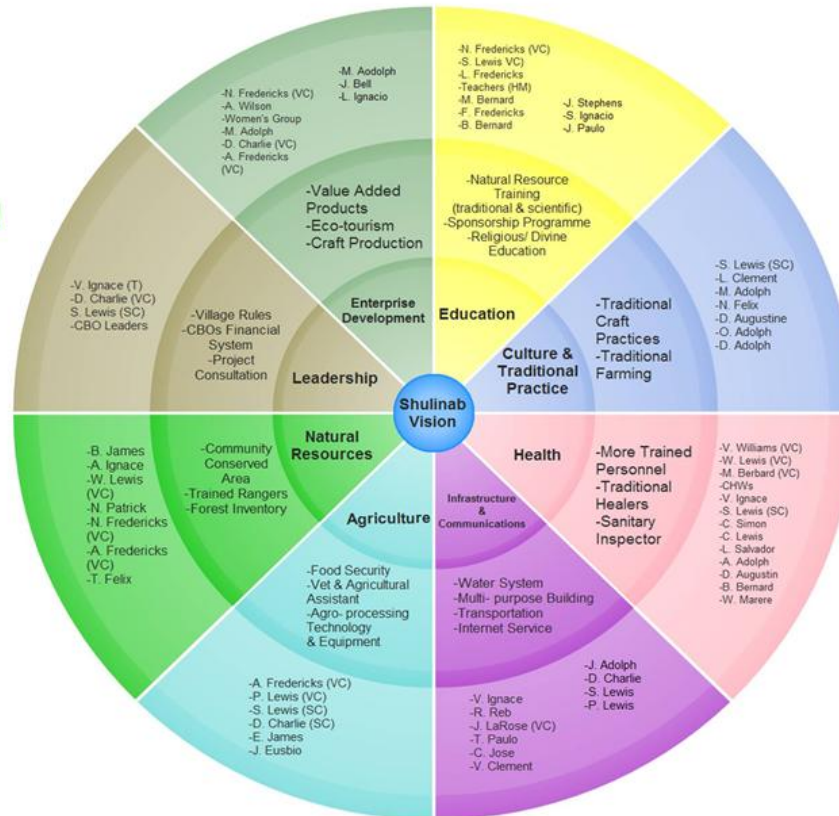
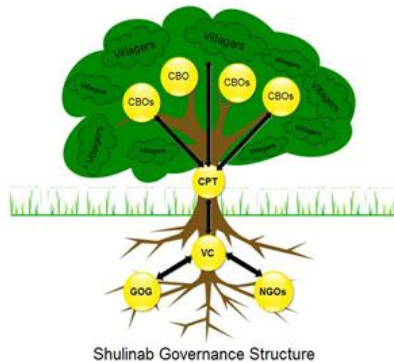


Shulinab Village Resource Development Plan

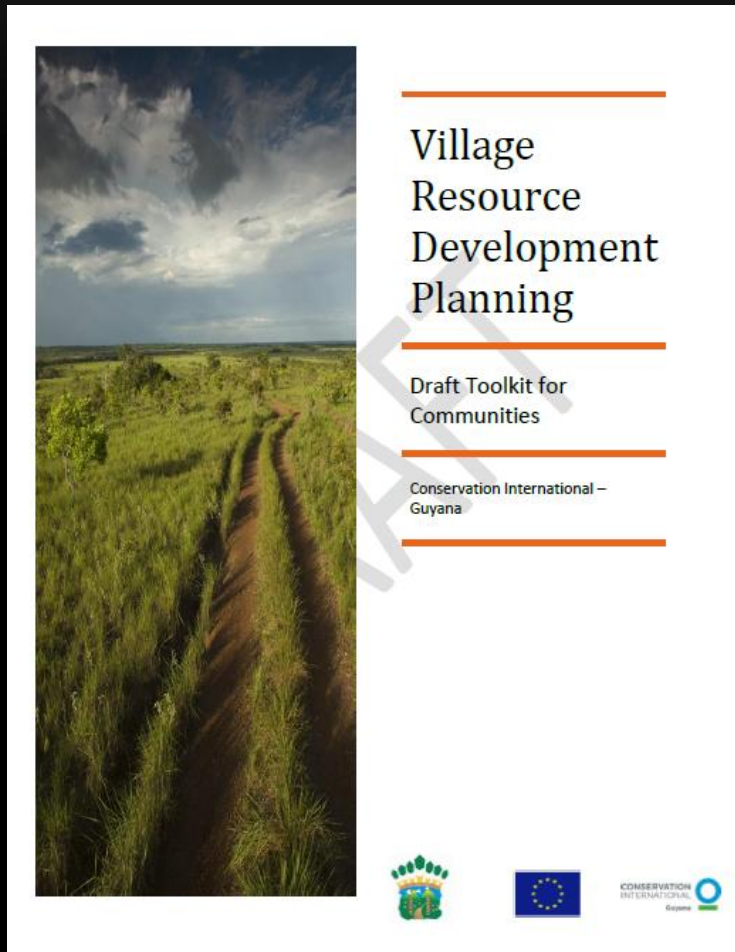
SHULINAB VISION STATEMENT

In 10 years time Shulinab will own and govern all of its traditional lands.
Working together we will achieve a better quality of life through education and human development while maintaining our traditional knowledge and practice. This will ensure that those coming behind us will benefit from what we have today.

Note: For more information on this plan, please contact the Village Council or the KMCRG.



PLANNING TOOLKIT



Village Resource Development Planning Toolkit for Communities

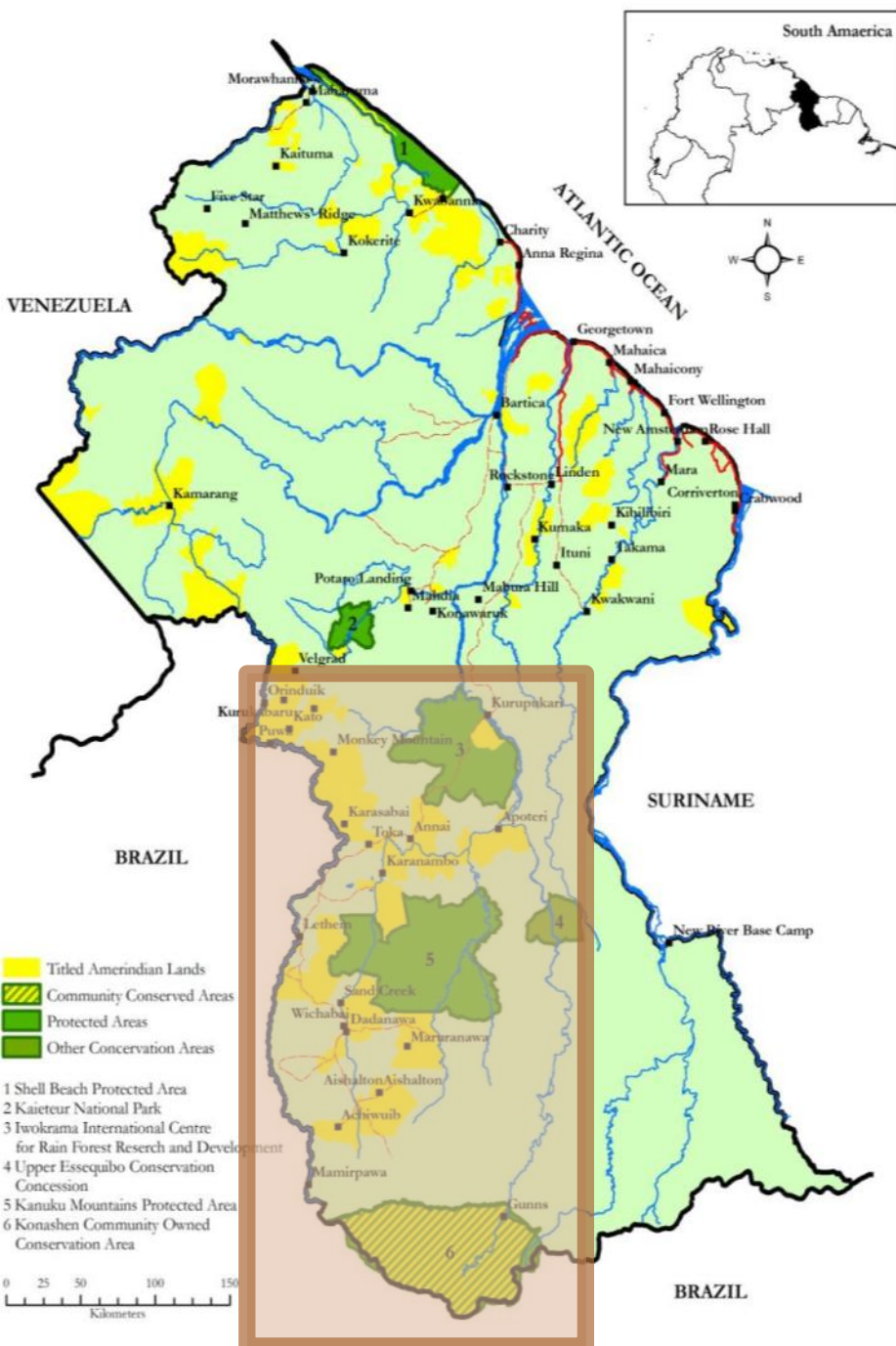
Who is the manual for?

Village councilors and Leaders
Community Based Organization
members

Community Development
officers/Workers

What does the manual do?

Strengthen community capacity for
integrated and sustainable community
development planning.

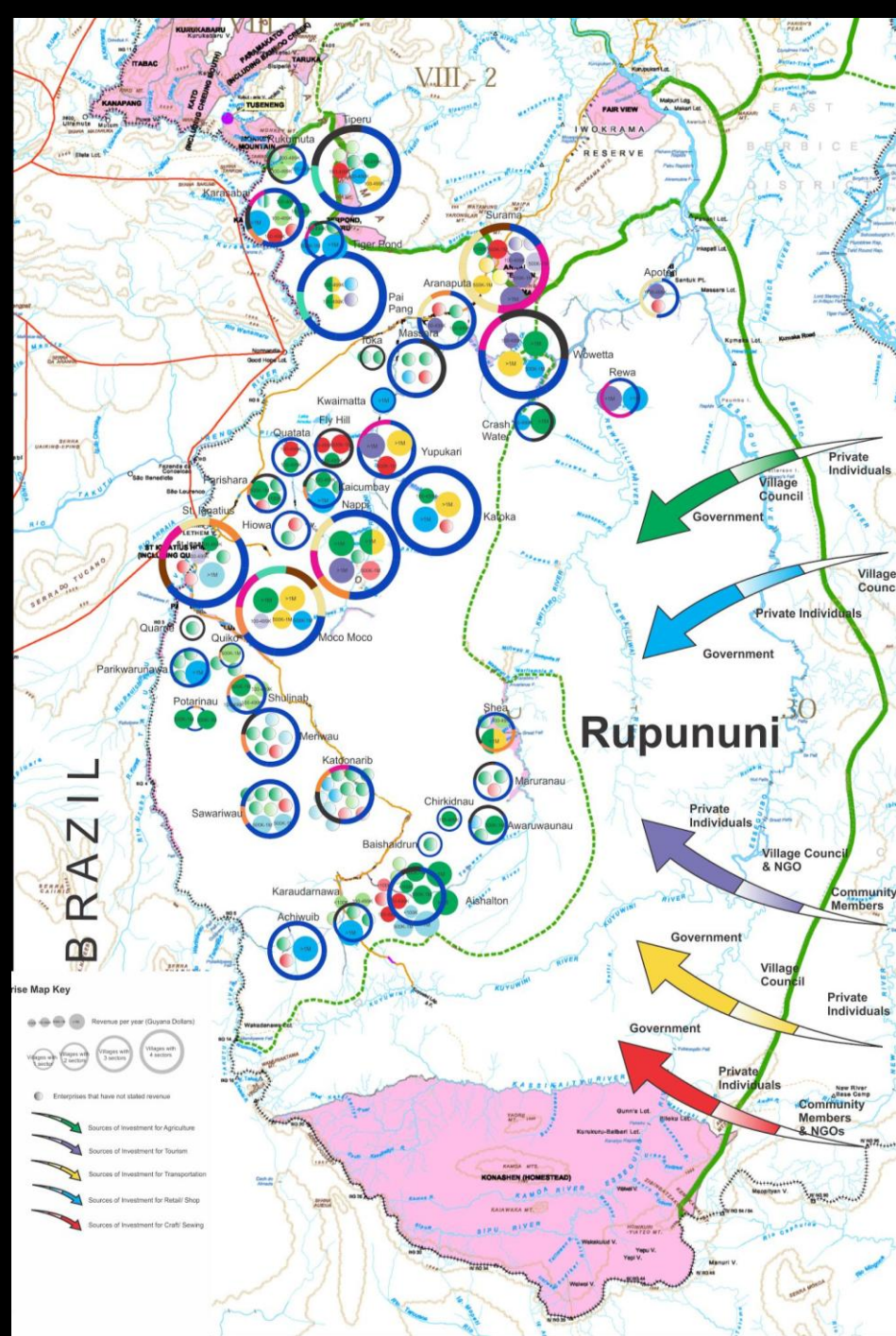


Improving Livelihoods through Low-Carbon Economic Development of the Rupununi

Village-Based Enterprises in the Rupununi

- A Preliminary Assessment

November 2013



Indigenous Peoples Commission

- Defining standard operating procedures to ensure PIC from local communities
- Ensuring involvement of local communities once PIC is granted
- Ensuring users engage directly with indigenous and local communities at all stages
- Negotiating benefit-sharing agreements
- Advocate for Indigenous and Local Community (ILC) focal point or 'points of contact' in addition to the proposed national focal point (Article 13)