



# Access and Benefit Sharing: Iwokrama's Experience

Vanessa Benn  
Iwokrama International Centre  
Stakeholders' Workshop  
December 4, 2013



# Iwokrama

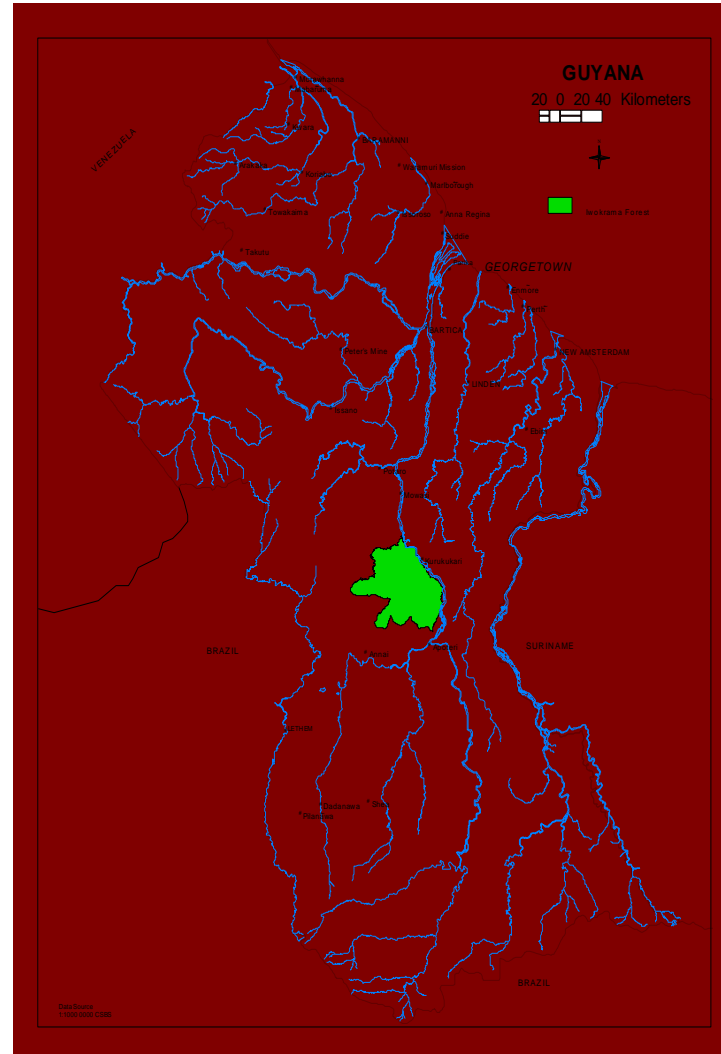


- A protected area
- An intact tropical rain forest
- 1,000,000 acres (371,000 hectares)
- Named after a Mountain Range – 1000 metres
- Indigenous Makushi - 'Place of refuge'



# Iwokrama International Centre for Rain Forest Conservation and Development

- An international experiment in sustainable development with the Commonwealth-1989
- Research Centre-Autonomous. International, Multidisciplinary
- 1 million acres of Forest in Central Guyana (371,000 ha)- 2% Guyana's Total Forest
- Iwokrama Act (1996)- Legal status





# Iwokrama's Mission

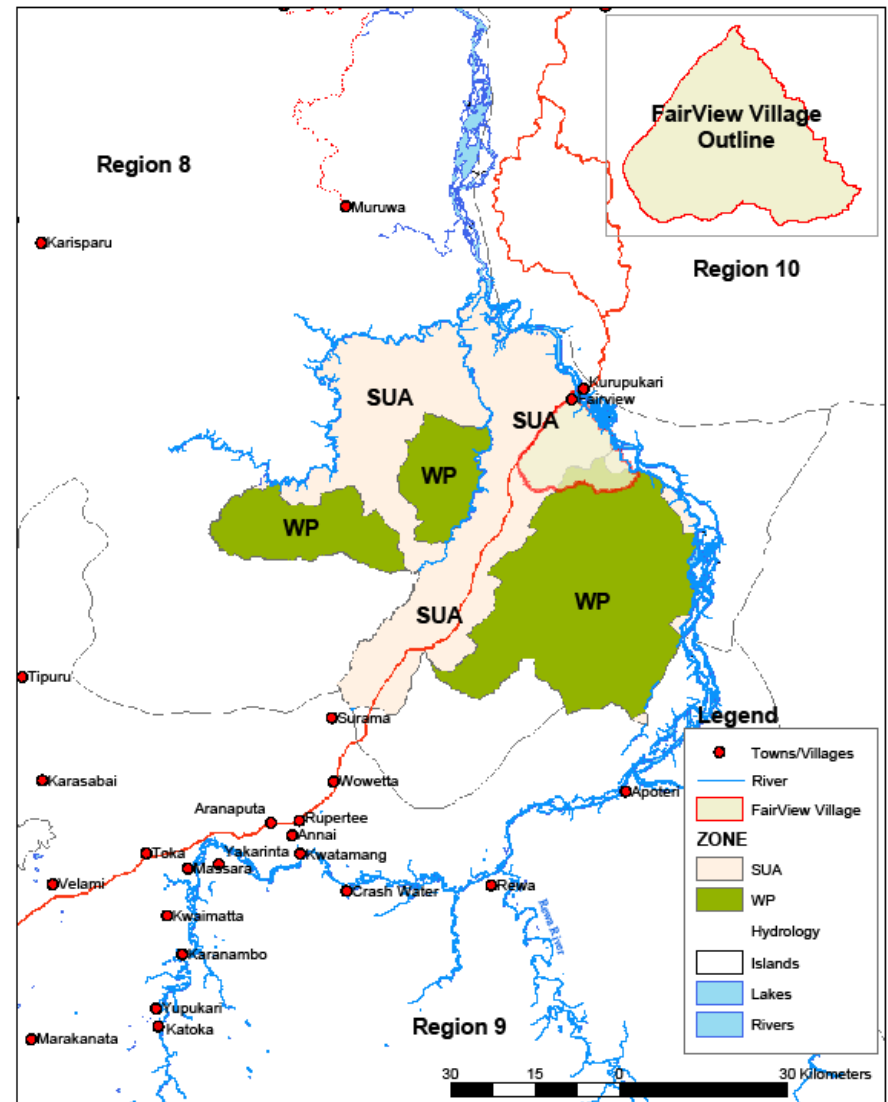
- To promote the conservation and the sustainable and equitable use of tropical rainforests in a manner that will lead
- to lasting ecological, economic and social benefits to the people of Guyana and to the world in general, by
- undertaking research, training, and the development and dissemination of technologies

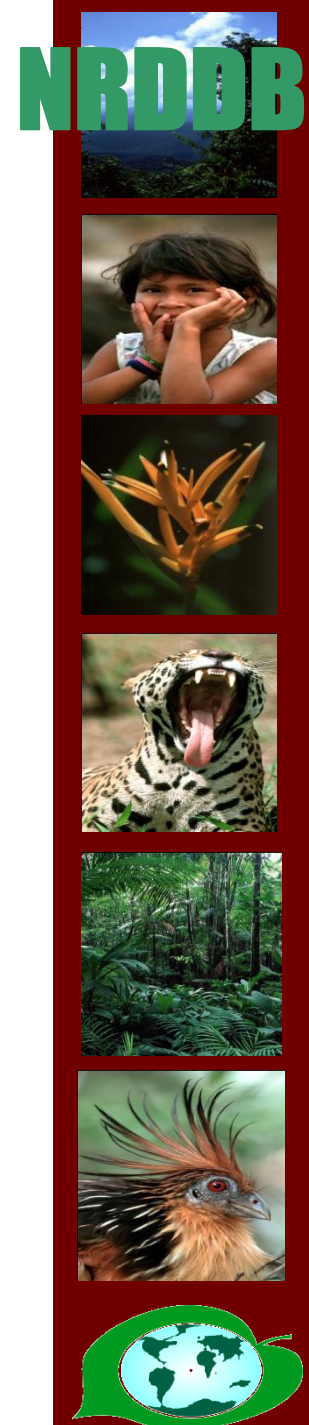
# Iwokrama and Communities



- Historical owners of Iwokrama Forest
  - *Rich culture*
  - *Language*
  - *Archeological sites*
- Iwokrama & how it relates to People
  - *Shareholders*


IWOKRAMA FOREST And NEIGHBOURING COMMUNITIES





# Frameworks for Participation

## The Iwokrama Act –

-  Legislation that guarantees and protects the rights and enables access to the use of the Iwokrama Forest by the Indigenous Peoples in the communities “neighbouring” the Forest who have customary (traditional) rights to the Forest
  - This section of the Act therefore provides the entry point for participation in the Iwokrama Programme by Amerindian communities living in and around the Iwokrama Forest.



# The Communities-North Rupununi

- 16 communities
- 6000 people
- 90% Amerindian (Indigenous)
- Mostly savannah



# North Rupununi District Development Board

- A multi-stakeholder forum and representative body for the people of the North Rupununi
  - *improve communications,*
  - *information-sharing,*
  - *decision-making,*
  - *benefit-sharing*
- Established 1996



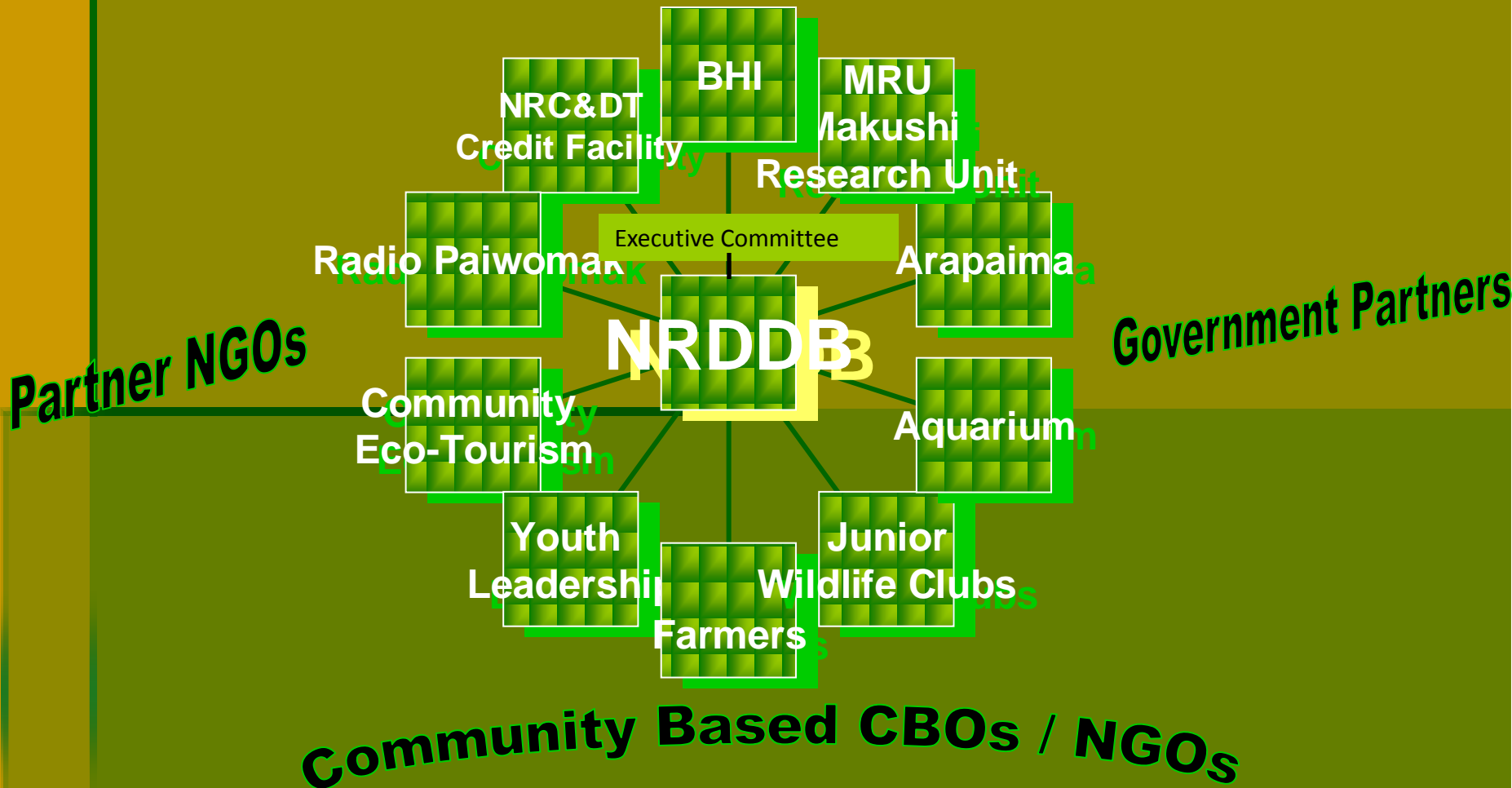
Chairman –Michael Williams  
Email: michaelhealis@yahoo.com



# North Rupununi District Development Board

## NRDDB UMBRELLA & INSTITUTIONS

### Village Councils



# Bina Hill Training Institute

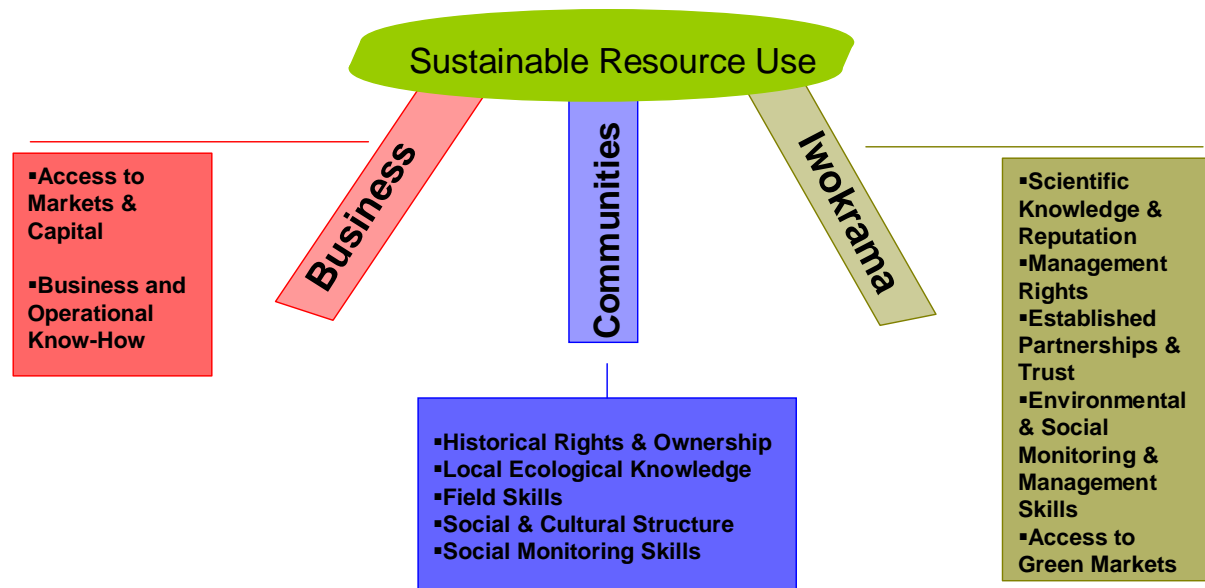
- Home sown, home grown (Vision of Sydney Allicock and colleagues)
- Only Amerindian training institution in Guyana
- Natural Resource Management





# Premise for Sustainable Resource Use

## Three Legged Stool

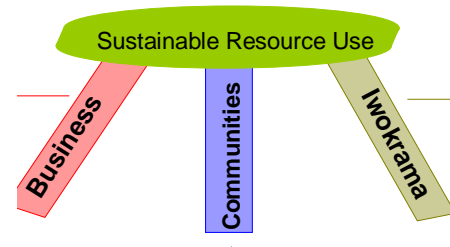


*Sydney Allicock, Surama*



# From Stakeholders to Shareholders

- Community rep. on highest level of Iwokrama's management- Board of Trustees
  - *No community representative on Board in initial stages*
  - *2002 – Sydney Allicock, Surama Village appointed as Community Representative on the Board*





# Collaborative Management with North Rupununi

- Memorandum of Understanding -2003
  - *Identified common goals and objectives and outlined protocols to be observed*
- Collaborative management agreement- NRDDDB-2005, revised 2008
  - *Sets out a framework where Iwokrama and NRDDDB will collaboratively manage the Programme Site*



# FairView Village- titled

- Owns 22, 000 hectares of the Iwokrama Forest
- Collaborative Management Agreement between FairView and Iwokrama
  - *Fair View Management Plan*
- Tourism- visitors fee
- Employment





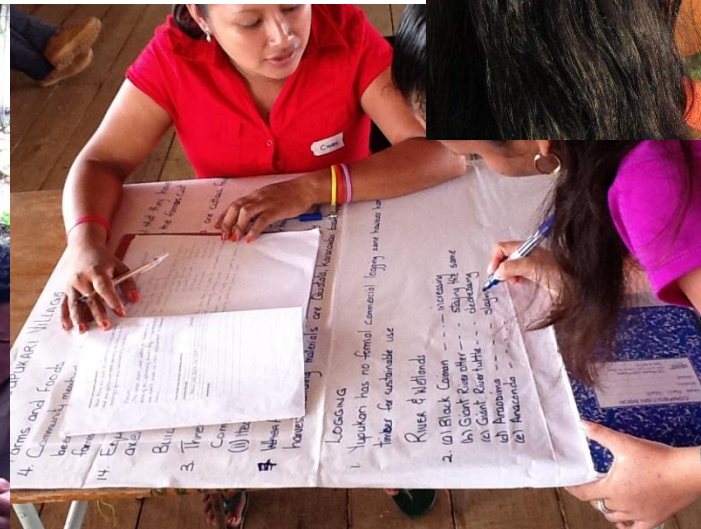
# Benefits for Communities

- Financial - Community Fund
  - *Established 2008*
  - *Fund-capacity building, conservation, community business development*
  - *Visitors' fees*
- Training Opportunities
  - *Courses- sponsored persons*
  - *Wildlife Clubs*
- Employment
  - *About 60 percent of Iwokrama staff from Rupununi communities*
- Business Partnerships
  - *Community Tourism*
- Co-management Rights
  - *Collaborative Management Agreements*



# Community MRV

- MRV- Monitoring, Reporting ,Verification
- NORAD funded
- 3 Partners- Iwokrama, North Rupununi District Development Board (NRDDB- Communities), Global Canopy Programme (GCP)- UK
- Linked to National MRVS system
- Nearly 40 community people hired to execute
- Use of smart phones (Samsung Galaxy)





# COBRA –Community Owned Best Practice

- EU funded, partners- Iwokrama communities, University of Holloway, UK
- Using participatory videos/photo stories techniques





# Capacity Building

- Collaborated with OCC, CI, NRDDDB, GFC, MoAA
- Several communities across Guyana participate
- Climate Change, ESS, REDD+, SFM, etc
- Communication support –radios, internet





# Encompass Project

- EU Funded
- Guyana (North Rupununi), Kenya, China, Newcastle
- With Newcastle University (UK)
- Preservation of heritage, culture
- Exchange visits, workshops, MSc programmes (3 Indigenous students- Masters completed in September 2013-Heritage Education and Management)





# Training Services

## Protected Areas Management

- Ranger Training*

- Tour Guiding*

- Collaborative Resource Management*

## Other specialized courses

The Training Unit also provides services for

- Researchers

- Interns and volunteer

- University groups, school groups etc

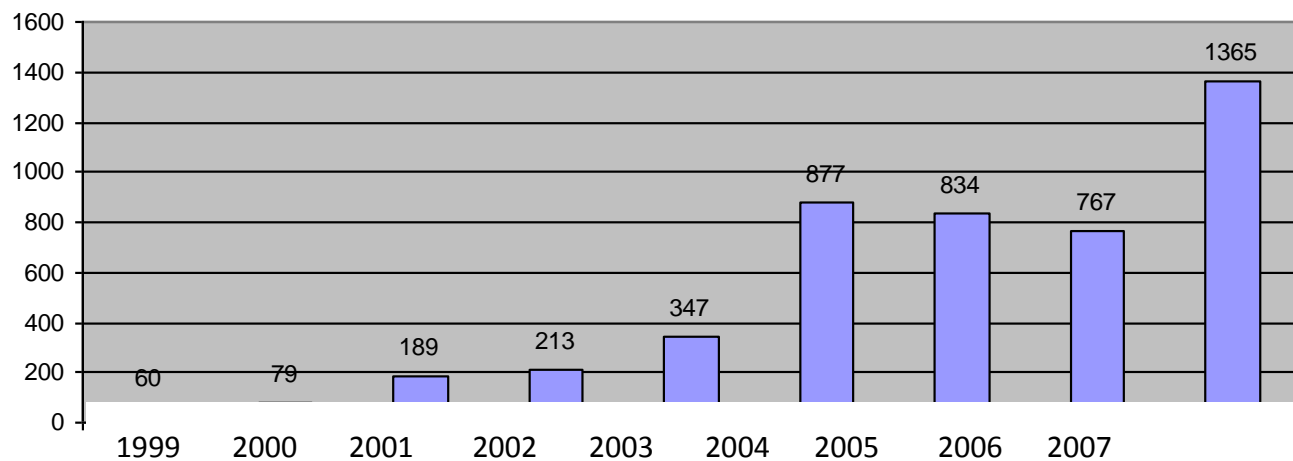


# Sustainable Tourism

- Iwokrama and Rupununi Sabana recognised as heart of Guyana nature tourism (*GTIS Report*)
- Link with other North Rupununi tourism community products
- Direct contributions -Community Fund



Number Visitors to Iwokrama





# Surama Village Community Tourism



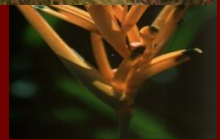
<http://www.suramaecolodge.com>





# Wildlife Clubs of the North Rupununi

- To help develop conservation leaders
- To share information
- To build relationship capacity





# Valuing Indigenous Traditional Knowledge and Expertise for Wise Management







Sustainable Management of Natural  
Resources is about PEOPLE.

PEOPLE MANAGING PEOPLE and  
PEOPLE MANAGING RESOURCES.

Iwokrama Forest

(c) Pete Oxford



# Respect, Roles & Responsibilities Important!

## Iwokrama Research Guidelines

## POLICY ON INTELLECTUAL PROPERTY RIGHTS, ACCESS TO GENETIC RESOURCES AND BENEFIT – SHARING

 ACCESS TO GENETIC RESOURCES: ACQUISITION AND SUPPLY

 INTELLECTUAL PROPERTY PROTECTION OF INDIGENOUS AND TRADITIONAL KNOWLEDGE AND RESOURCES

☐ **BENEFIT SHARING:** ACQUISITION AND SUPPLY OF BIOLOGICAL MATERIAL



- The lessons of the Iwokrama-NRDDDB partnership for co-management relies on the “ownership” by local people, the practice of principles for good governance and the combined vision and skills of stakeholders and partners in the process
- Iwokrama’s work programme and activities designed & adaptable to support Local (community), National (GoG, UG) & International initiatives

*Thank you!*



# *Thank you!*

Iwokrama International  
Centre

[www.iwokrama.org](http://www.iwokrama.org)

North Rupununi District  
Development Board

[www.nrddb.org](http://www.nrddb.org)

